

· 2026 SILICON VALLEY MODERN HOMES TOUR ·

The Diamond House

2338 THOMPSON COURT · MOUNTAIN VIEW,
CALIFORNIA



5



4.5



3,109



8,089

"Talent is good. Practice is better. Passion is best."

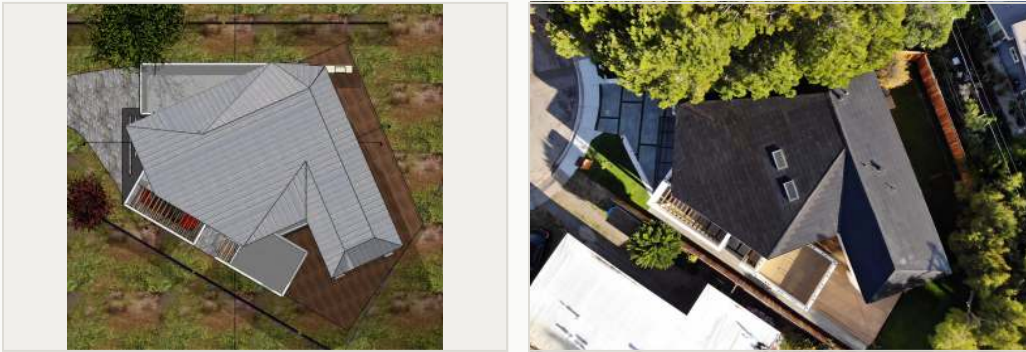
— FRANK LLOYD WRIGHT

The Diamond House is a showcase of an occupant-experience approach. From visual elements to technological advancements, we challenged ourselves to develop a residence that delights on a daily basis.

— SUNDEEP RANIWALA · WINDY CITY BUILDERS · CSLB #1038134

An irregular polygonal pie-shape lot and complex city setbacks led to an unexpected gift — a faceted shape we call the Diamond House, reinforced by the glassy photovoltaic roof tiles. The sculptural corner stairwell carries natural light cascading two levels. Each main space is a discrete block — virtually no real hallways exist — and each side opens to its own outdoor area.

— DAVIDE GIANNELLA · AIA · ACADIA ARCHITECTURE · LEED AP



Architect's sketch (left) — completed home from above (right).



II · ARCHITECTURE

Light by day. Drama by night.

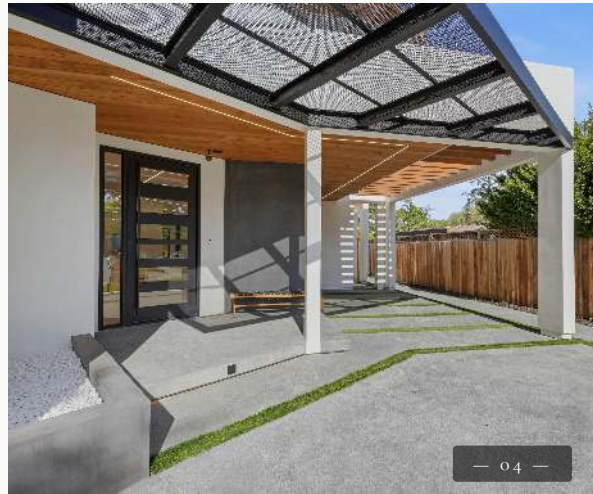
The home composes itself from stucco, glass, steel, and wood. By day, San Francisco Sparkle concrete blocks shimmer underfoot; by night, integrated LED accents add visual drama. An iron beam, an iron pivot entry door, a wood pergola, and a black-glass garage door complete the architectural language.



III · ARCHITECTURE

Pergola, awnings, and the rhythm of the eaves.

A wood pergola, deep cantilevered eaves, and an angled awning over the front entry compose the home's outward language — drawing horizontal lines across stucco volumes and framing the linear LED that runs the perimeter.



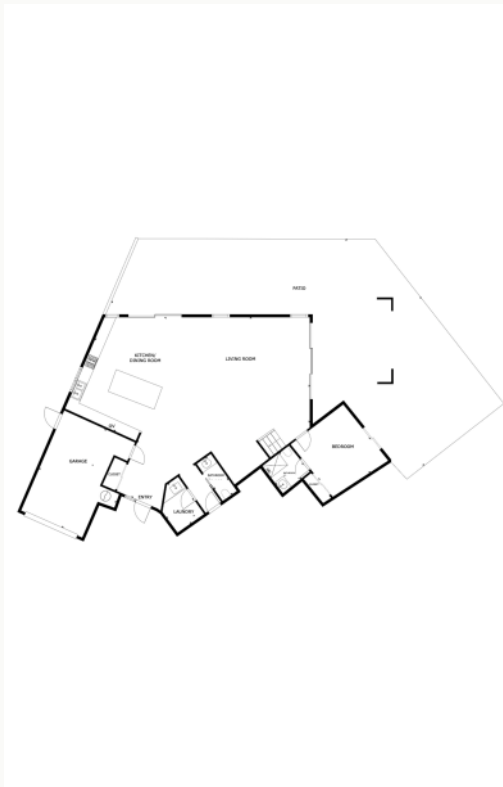
IV · LAYOUT

Ambiance over efficiency.

Ambiance over efficiency. Large, open areas filled with natural light. Generous room proportions.

An overhead skybridge separates the primary suite from the secondary bedrooms, with the closet and bath further isolating the suite as a private retreat. The outdoor kitchen extends directly from the indoor kitchen, and expansive outdoor spaces give the residence the feeling of multiple distinct areas — rather than a tightly-packaged dwelling.

FIRST STORY



SECOND STORY





V · KITCHEN + LIVING

On the 1st floor large glass expanses mirror the original Mackay Eichler's placement, honoring the classic California indoor-outdoor lifestyle.

From custom European cabinetry with stainless steel and thin modern profiles to the 3-dimensional sloped ends of the 9-foot island for presence, every detail was thought out. Windows and doors feature wired pockets that hide electronic blinds so the clean modern aesthetic is undisturbed yet remains functional.

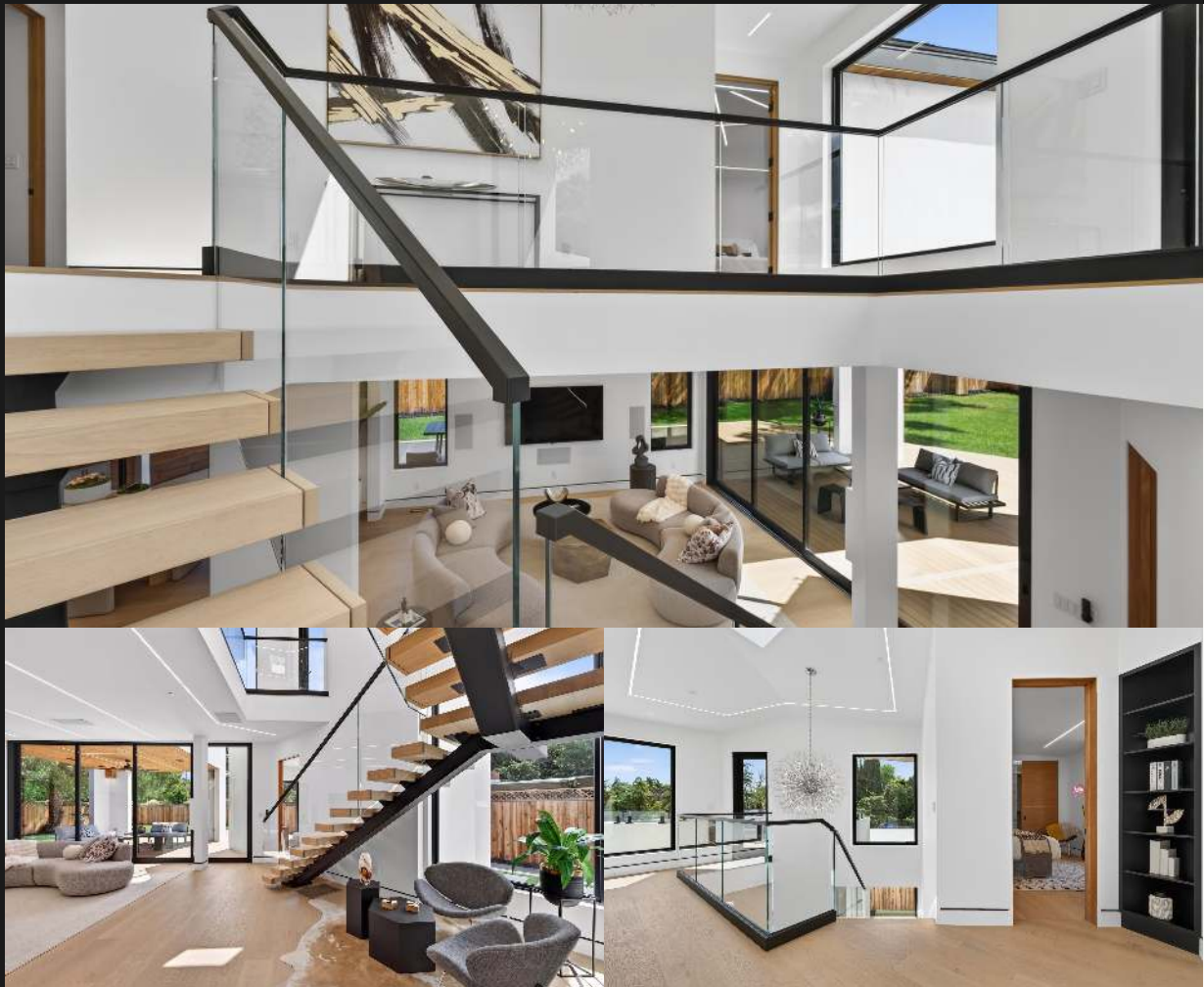




VI · INDOOR / OUTDOOR

Two Fleetwood sliding glass walls. One continuous room.

Expansive sliders dissolve the line between interior and a wraparound deck. The concept is a circular orbit around the living room's TV wall — guests move seamlessly from the interior kitchen, out to the outdoor kitchen, across the patio, back inside through the living room, and around to the interior kitchen again. Care was taken to minimize thresholds, top and bottom, and to hold ceiling heights consistent throughout — maximizing the indoor-outdoor effect.



VII · THE STAIRWELL

A glass-and-metal staircase rises through a sun-filled atrium with full-height windows and a sculptural chandelier — designed to lift the mood with every trip up or down.



VIII · THE PRIMARY SUITE

A grand place to rest and relax.

While admiring the bookmatched slabs and custom finishes, unwind under the dual rain showers or in the soaking tub. Afterward, step into the closet, where swing-out mirrors and a built-in vanity create a grand dressing experience — with your finest pieces showcased along the back wall.



X · SPECIFICATIONS

Every choice, considered.

PROPERTY OVERVIEW

New construction single family residence
5-bedroom · 4.5-bath · 2-story
3,109 sq ft living area
8,089 sq ft lot

Monta Loma · double cul-de-sac

ARCHITECTURE

Davide Giannella · Acadia Architecture
Modern Mediterranean
Open plan, individuality of spaces

EXTERIOR FINISHES

Tesla Solar Roof
LaHabra stucco · hand-troweled finish
Cedar-stained wood soffits
Alaskan IPE pergola beams
Iron beam awning · perforated metal infill + integrated LED
San Francisco grey "sparkle" concrete
Integrated metal gutters · in-wall downspouts
Laminated Class 2 safety glass parapet railings
48" Custom Iron Pivot Door
Timber Tech composite decking

SMART HOME, NETWORKING & AUDIO

Smart Home

Home Assistant Green server
Lutron Caseta switches & hub
Ecobee Premium thermostats
Nest security cameras and doorbell
Rachio smart sprinkler system
Moen smart shower controller
Miele@home appliance integration

Networking

17 Ethernet ports throughout
Power + Ethernet in closets for hidden Wi-Fi access points

Audio

Monoprice THX Ultra Concealed Home Theater Speakers in Dolby Atmos 5.4 configuration
Ceiling speakers in kitchen + outdoor patio

INTERIOR FINISHES

Flooring

10.4" wide-plank, long-length, 3/8" engineered European oak · 6mm wear layer

Doors & Windows

Fleetwood 3070 series glass sliding walls
Andersen 100 Series composite windows & patio doors
8' engineered solid core mahogany interior doors with metal inlays
Wood jambs · Assa Abloy automatic door droppers

Trim & Detailing

Trimless modern flush door jambs
Fry Reglet aluminum trim · flush wood baseboards
Window pockets pre-wired for concealed smart blinds (where possible)

Lighting

Interior LED in aluminum channels
High-CRI LED strips, aerospace supplier

STAIRCASE

ViewRail Flight steel mono-stringer system
Glass panels with wood treads

CLOSETS

Shelves with integrated LED in primary suite

GARAGE

Black mirror glass + aluminum garage door
Chamberlain side-mount smart opener

BATHROOMS

Porcelain tile + Cosentino Dekton slab walls
Wall-mounted vanities with LED accent
LED mirrors with defrost
LG Hausys Hi-Macs custom ramp sinks
Grohe fixtures throughout
Wall-mounted faucets
Moen digital shower control (primary bath)
Wall-mounted toilets · electrical + water for bidets
1/2" thick shower glass

NEIGHBORHOOD & SCHOOLS

Schools (Reader to verify enrollment & availability)

Monta Loma Association · montaloma.org

Los Altos High School

10/10 GreatSchools · 85 Bay Area, #18 CA (Niche)

Crittenden Middle School

9/10 GreatSchools

Monta Loma Elementary

Steve Jobs credited teacher Imogene "Teddy" Hill

KITCHEN

Cabinetry

Spanish & Italian laminate, European boxes
Upper cabinets · lift-up doors
Stainless steel + aluminum gola trim
Custom LED lighting
9' waterfall island · 3-D angled ends

Sink & Faucet

2-tier 39" workstation sink · Grohe faucet

Appliances

Miele KE2912Vi 36" push-to-open refrigerator (Miele@home)
Miele H7170BM speed oven · microwave + broiler (Miele@home)
Miele H2780BP convection oven
Miele KM6375 36" induction cooktop
Miele G5051SCVi dishwasher
Zephyr Pisa hidden range hood

Countertops & Backsplash

Cosentino Silestone

HVAC & MECHANICAL

Mitsubishi heat pump system

Central + attic air handlers PEFY-P6/NMHU-E2

5-ton heat pump MZ-SM60NAM6

IQAir Perfect 16 filtration + IQAir AirVisual Pro monitor

Ecobee Premium thermostats

Per-room supply/return + central returns

Modern ceiling and floor register covers

Water Heating

Bradford White 240v hybrid heat pump RE2H80T10-CON · internet module

Plumbing

Copper plumbing (hot, cold, return)
Hot water recirculation
Cast iron drain risers between floors to reduce sound

ELECTRICAL & INFRASTRUCTURE

Solar & Power

Tesla Solar Roof · 7 kW system

Leviton copper-bus smart-ready subpanels

Power line underground via PG&E · telecom conduit

Pre-Wiring & Expansion

Patio wiring for heaters & accessories
Garage + patio wiring for EV chargers
Roof wiring for future accessories

GENERAL · All information provided is deemed reliable but is not guaranteed and should be independently verified by the reader. Square footage, lot size, and room dimensions are approximate. This is a guide only, material facts should be investigated by the reader.

SCHOOLS · School attendance zone boundaries are subject to change. Reader should verify school assignments, enrollment eligibility, ratings, and rankings directly with Mountain View Whisman SD (K-8) and Mountain View–Los Altos Union HSD. GreatSchools and Niche ratings are as of writing date and may change.

2338thompson.com

DEVELOPER

Windy City Builders

CSLB #1038134

650.564.4941

sunny@windycitybuilders.com

www.windycitybuilders.com

ARCHITECT

Davide Giannella

Acadia Architecture · AIA · LEED AP

408.219.0601

info@acadia-architecture.com

acadia-architecture.com

